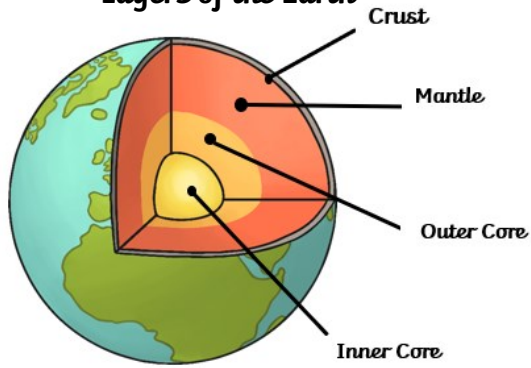
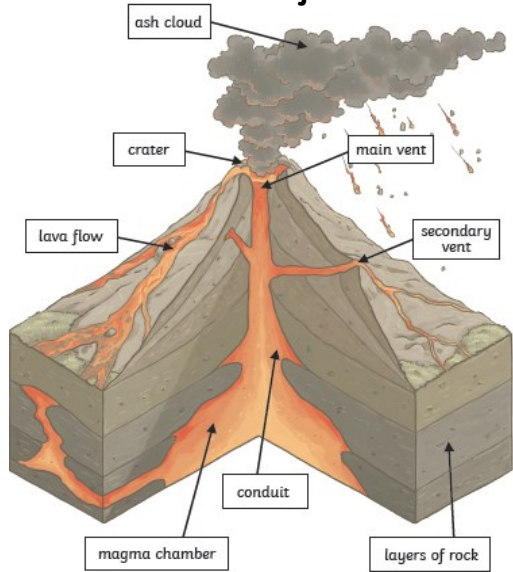


Layers of the Earth

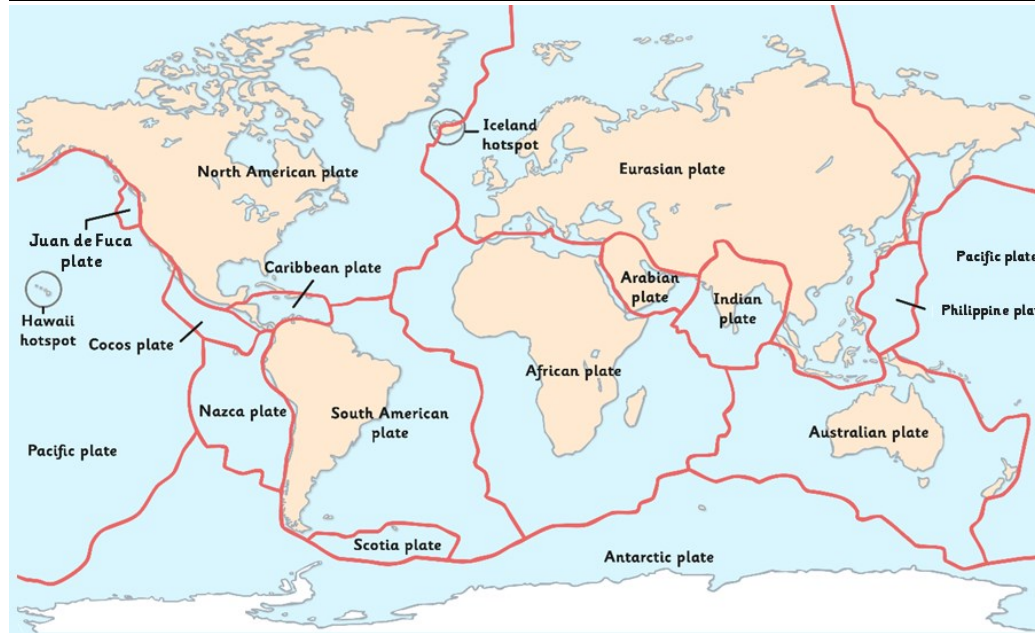


Cross-section of a volcano



Volcanoes and Earthquakes

Why does our world keep changing?



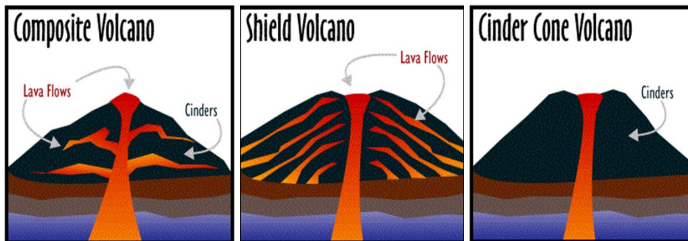
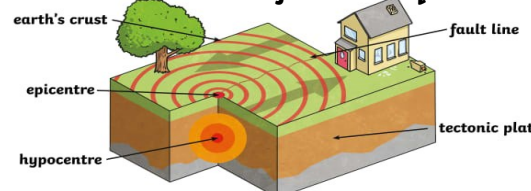
Vocabulary

Active	A volcano that has erupted recently and it may possibly erupt again.
Ash	Fragments of lava or tiny piece of rock that are blasted into the air by volcanic explosions.
Conduit	An underground passage which magma travels through.
Crater	The hole in the top of a volcano where lava comes out.
Dormant	A volcano that has not erupted for a long time but could still erupt in the future.
Epicentre	The point on the Earth's surface that is directly above the hypocentre.
Eruption cloud	When a volcano releases gas and ash into the air, forming a cloud.
Extinct	A volcano that has erupted thousands of years ago and will likely never erupt again.
Fault line	A long crack in the surface of the earth.
Hypocentre	The focus of an earthquake.
Lava	Magma that comes to the Earth's surface.
Magma	Hot liquid rock underneath the Earth's surface.
Pyroclastic flow	A pyroclastic flow is a mixture of hot steam, ash, rock and dust.
Throat	The entrance of a volcano. It ejects lava and volcanic ash.
Tectonic plates	Pieces of the Earth's crust.
Vent	The main route the lava takes from the magma chamber to the Earth's surface.

Mount Etna, Italy



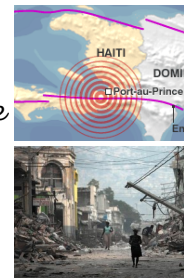
Cross-section of an earthquake



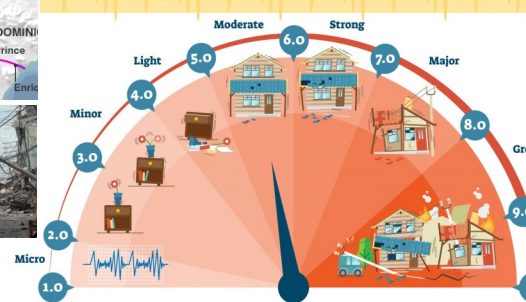
Mount Vesuvius, Ita-



On 12th January 2010, an earthquake measuring 7.0 on the Richter scale struck Haiti, a country in the Caribbean. It killed over a quarter of a million people



EARTHQUAKE MAGNITUDE SCALE



The **Ring of Fire** is a horseshoe-shaped line on a map around the edge of the Pacific Ocean. It is home to around 75% of the world's volcanoes and 90% of the world's earthquakes.

