



## Knowledge Organiser



Year 3



### Key vocabulary

- \* Joan Miró
- \* Sculpture
- \* Surrealism
- \* Bold
- \* Expressive
- \* Slip
- \* Rolling
- \* Pulling
- \* Holes
- \* Hollows
- \* Joining
- \* Pinching
- \* Details
- \* Squeezing
- \* Tools

### Who was Joan Miró?



- Joan Miró was a Spanish painter/sculpture born 1893 in Barcelona.
- Miró started to paint when he was fourteen years old.
- He first started to draw trees and landscapes.
- He became influenced by Pablo Picasso and his style changed to surrealist.
- Miró used bold and expressive colours.
- He used a variety of media for his art such as painting, sculpture, printing and ceramics.

### Sculpture techniques



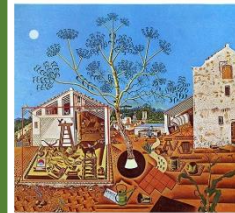
### Famous artwork by Miró

#### The Harlequins Carnival (1925)



This painting shows a merry making festival known as *Mardi Gras*, the celebration that begins the fasting of Lent and starts on the day before Ash Wednesday. This painting is one of Miró's most famous surrealism pieces.

#### The farm (1922) was Miró's most famous piece of art.



Miró regarded *The Farm* as key to his artistic career describing it as *"the summary of one period of my work, but also the point of departure for what was to follow."* The painting is regarded as the highest point of Miró's realistic representations, before he turned towards surrealism.

### How do I produce art like Miró?

