

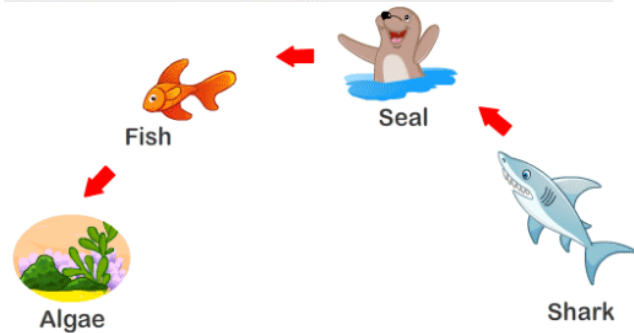


Together, we flourish.

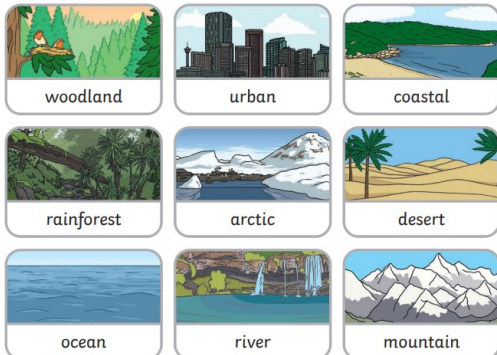
"I came that they may have life, and have it abundantly" John 10:10



This food chain shows a leaf is eaten by a worm, which is then eaten by a bird. The arrow means 'is eaten by'.



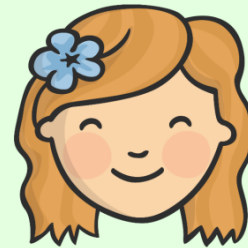
Examples of habitats:



Characteristics of living things

- Movement
- Respiration
- Sensitivity
- Growth
- Reproduction
- Excretion
- Nutrition

MRS GREN



Plants are also living things and they have to be able to do all the same things that animals and humans do to stay alive, even if they do them slightly differently.



Plants need energy but they don't get their energy from food - they get it from sunlight.

Plants use their seeds to reproduce and grow new plants.



Plants are also able to move and grow, even if they can't get up and walk! They often bend towards the sunshine so they can get more energy.

Key Vocabulary

life processes	These are the things that all living things do. They move, breathe, sense, grow, make babies, get rid of waste and get their energy from food.
living	Things that are living have all the life processes .
dead	Things that are dead were once living . They did have all the life processes but don't now.
never living	Things made out of metal, plastic or rock were never living . They never had the life processes .
food chain	A food chain shows how each animal gets its food. Food chains are one of the ways that living things depend on each other to stay alive.
food sources	This is the place a living thing's food comes from.
habitat	A habitat is the natural place something lives. A habitat provides living things with everything they need to survive such as food, shelter and water.
microhabitat	A microhabitat is a very small habitat in places like under a rock, under leaves or on a branch. Minibeasts live in microhabitats . The microhabitats have everything they need to survive .
depend	Many living things in a habitat depend on each other. This means they need each other for different things.
survive	This means to stay alive.